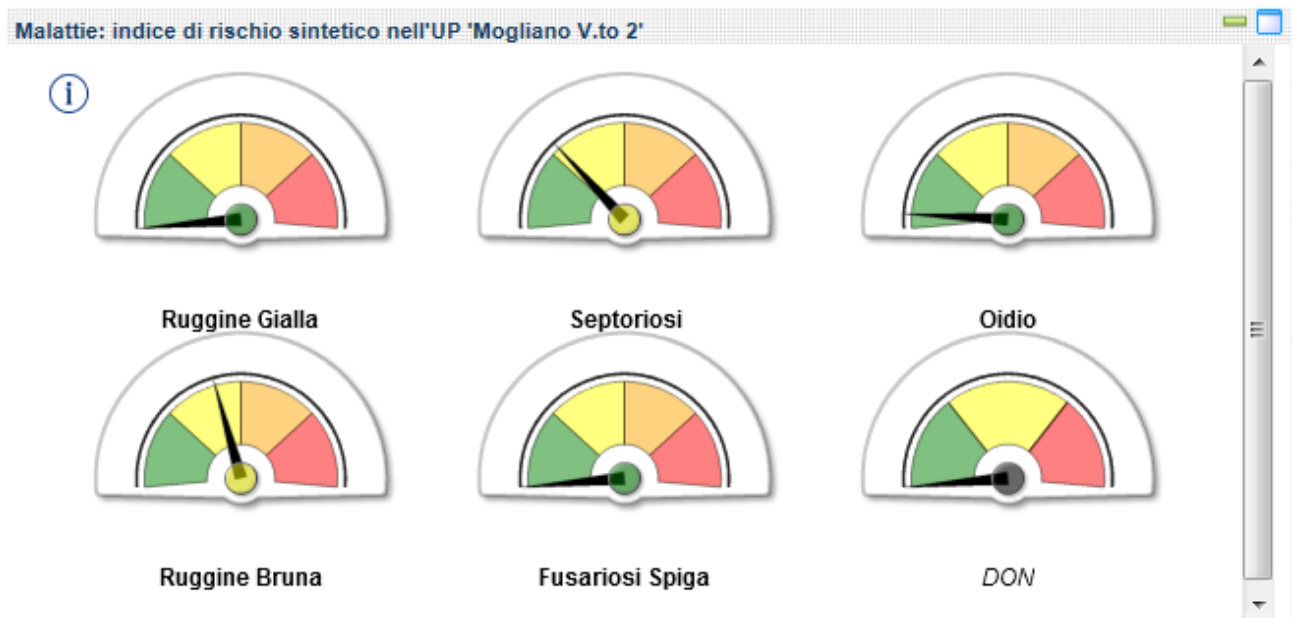
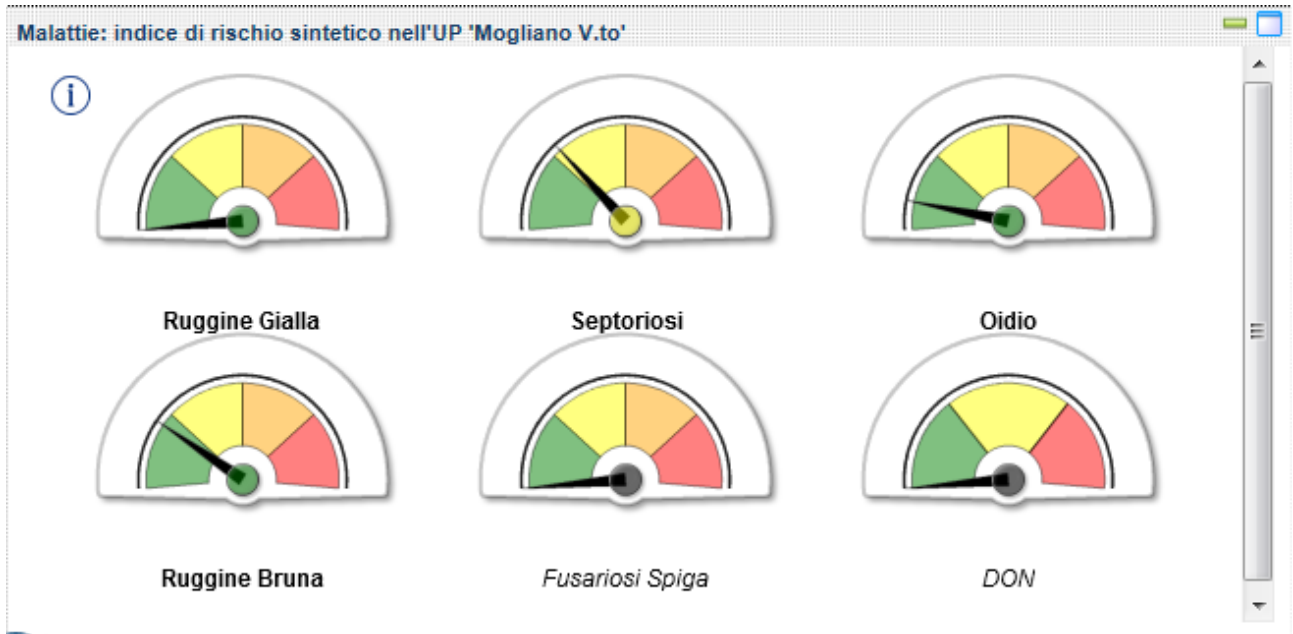
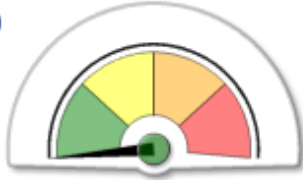


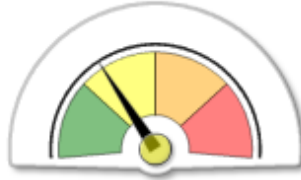
OUTPUT PIATTAFORMA HORTA 02/05/2016



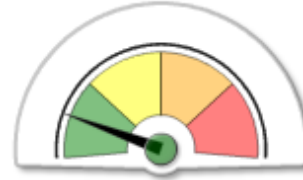
Malattie: indice di rischio sintetico nell'UP 'Eraclea'



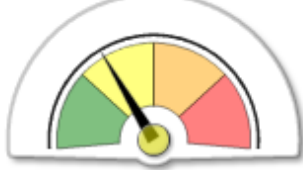
Ruggine Gialla



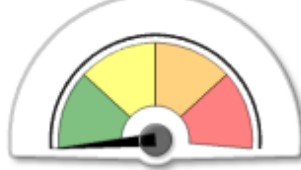
Septoriosi



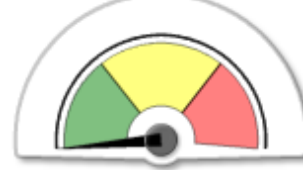
Oidio



Ruggine Bruna

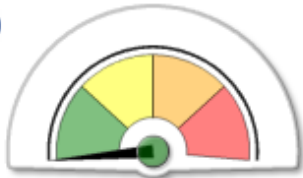


Fusariosi Spiga

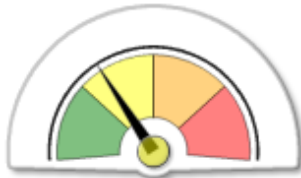


DON

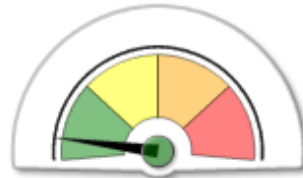
Malattie: indice di rischio sintetico nell'UP 'Eraclea 2'



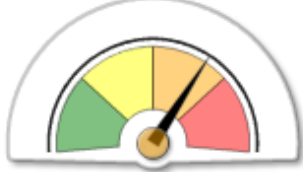
Ruggine Gialla



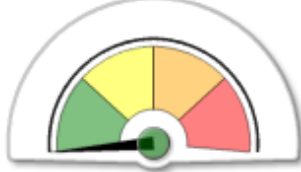
Septoriosi



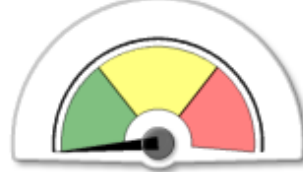
Oidio



Ruggine Bruna

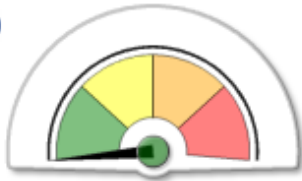


Fusariosi Spiga

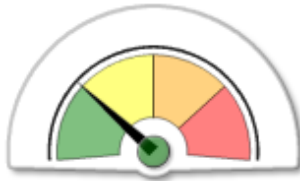


DON

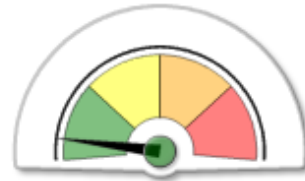
Malattie: indice di rischio sintetico nell'UP 'Rovigo'



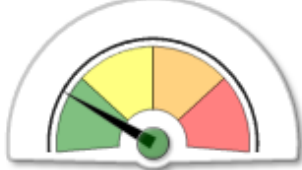
Ruggine Gialla



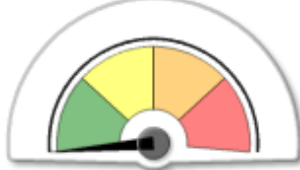
Septoriosi



Oidio



Ruggine Bruna

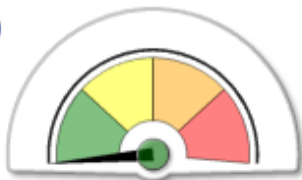


Fusariosi Spiga

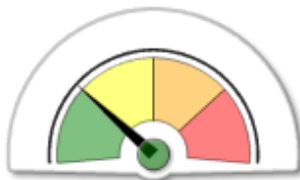


DON

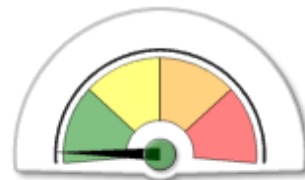
Malattie: indice di rischio sintetico nell'UP 'Rovigo 2'



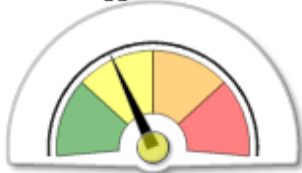
Ruggine Gialla



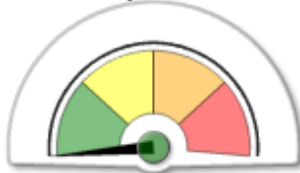
Septoriosi



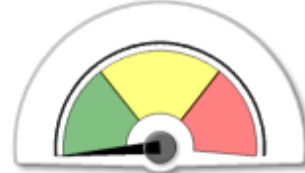
Oidio



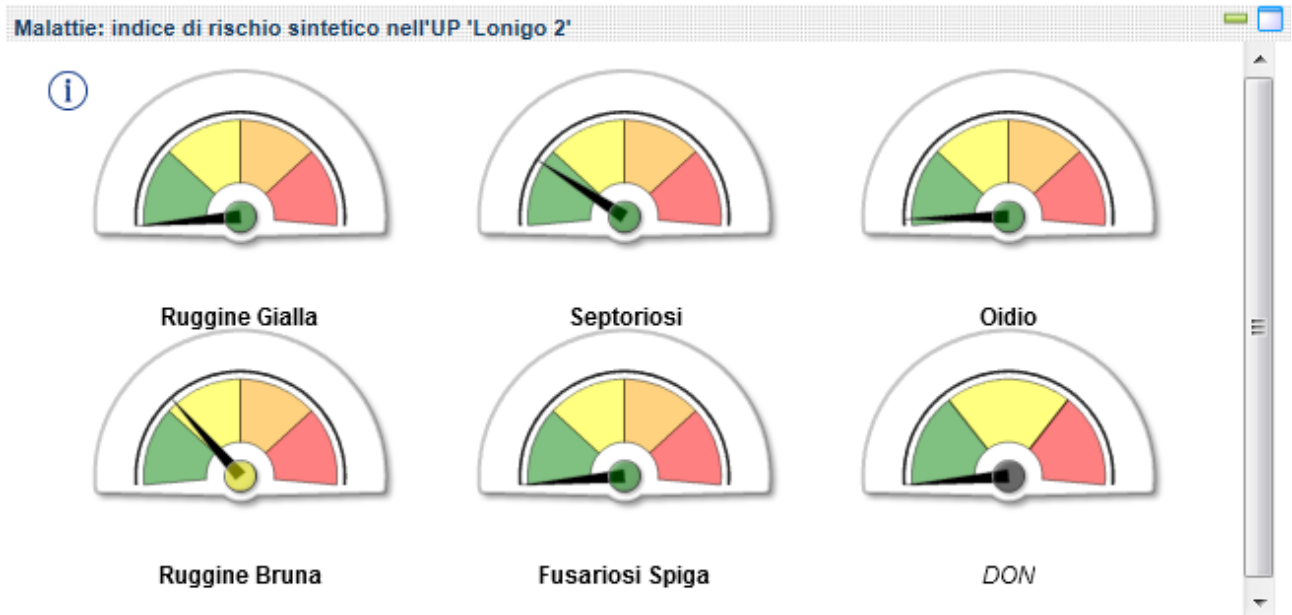
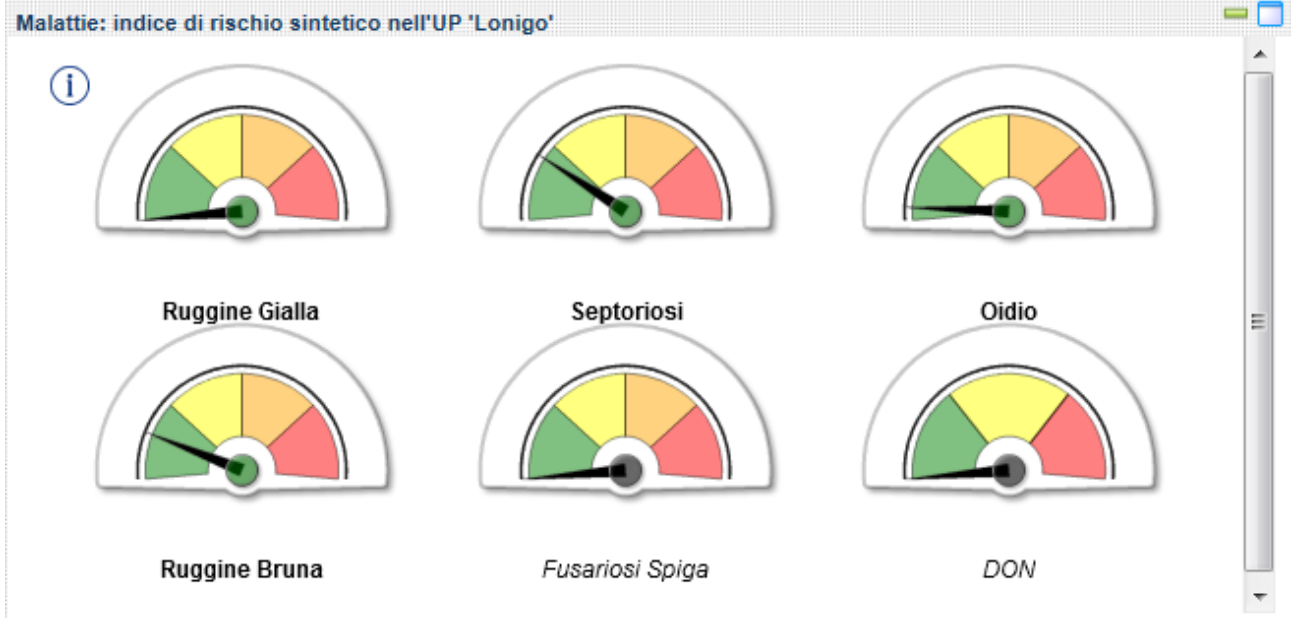
Ruggine Bruna



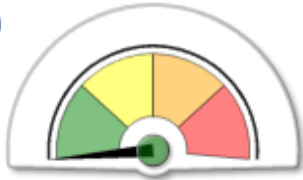
Fusariosi Spiga



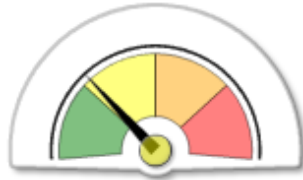
DON



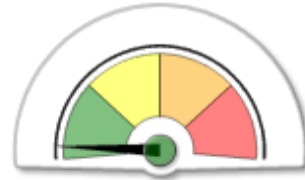
Malattie: indice di rischio sintetico nell'UP 'Verona'



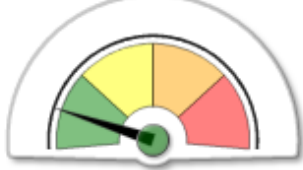
Ruggine Gialla



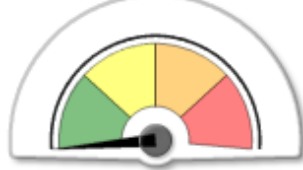
Septoriosi



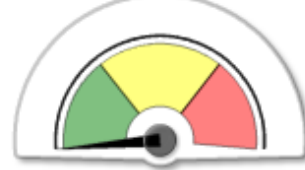
Oidio



Ruggine Bruna

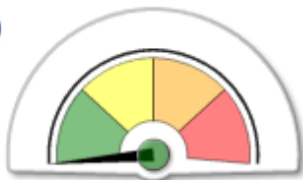


Fusariosi Spiga

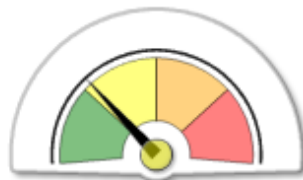


DON

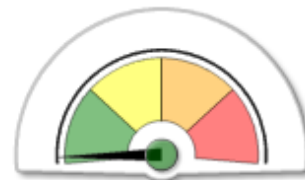
Malattie: indice di rischio sintetico nell'UP 'Verona 2'



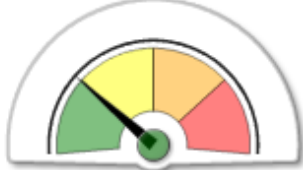
Ruggine Gialla



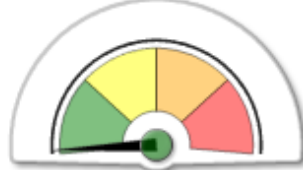
Septoriosi



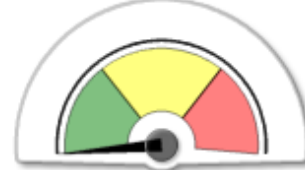
Oidio



Ruggine Bruna

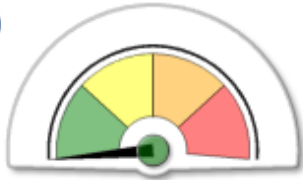


Fusariosi Spiga

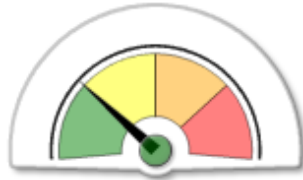


DON

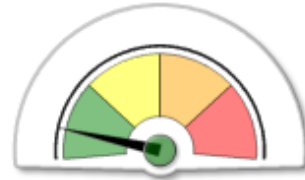
Malattie: indice di rischio sintetico nell'UP 'Legnaro'



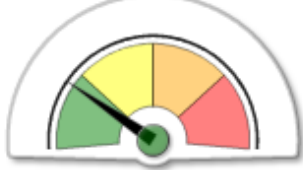
Ruggine Gialla



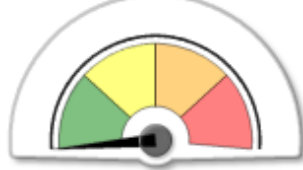
Septoriosi



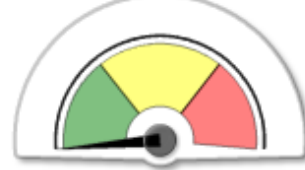
Oidio



Ruggine Bruna

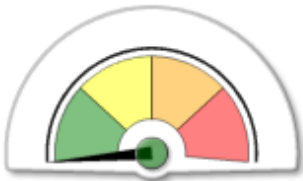


Fusariosi Spiga

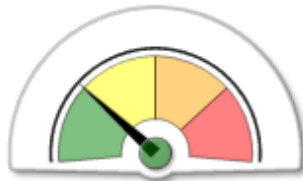


DON

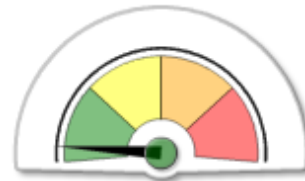
Malattie: indice di rischio sintetico nell'UP 'Legnaro 2'



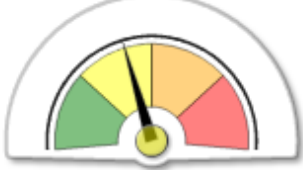
Ruggine Gialla



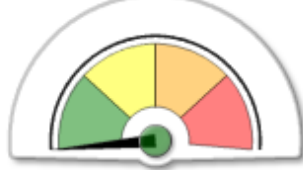
Septoriosi



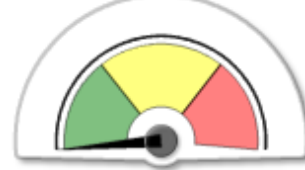
Oidio



Ruggine Bruna

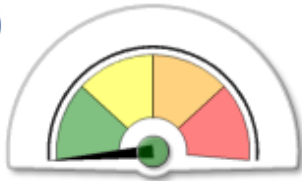


Fusariosi Spiga

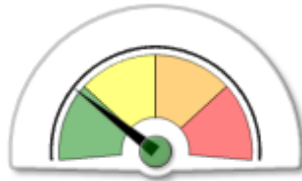


DON

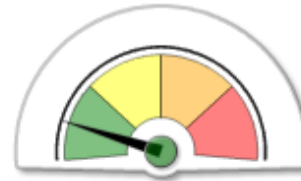
Malattie: indice di rischio sintetico nell'UP 'Venezia - Cavarzere'



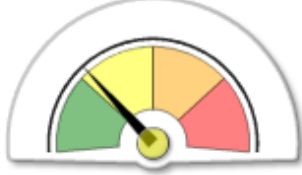
Ruggine Gialla



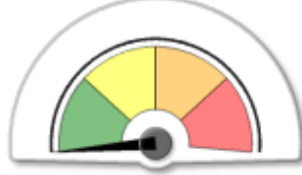
Septoriosi



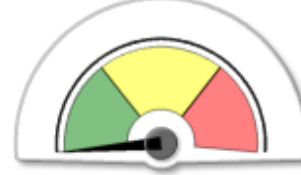
Oidio



Ruggine Bruna

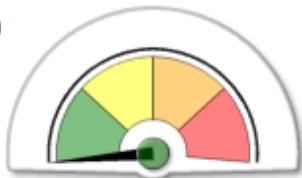


Fusariosi Spiga

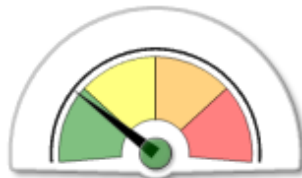


DON

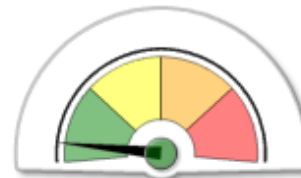
Malattie: indice di rischio sintetico nell'UP 'Venezia - Cavarzere 2'



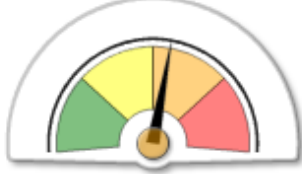
Ruggine Gialla



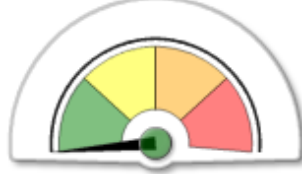
Septoriosi



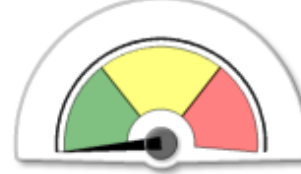
Oidio



Ruggine Bruna

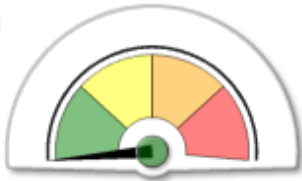


Fusariosi Spiga

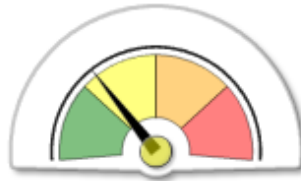


DON

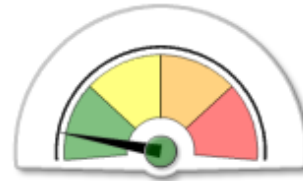
Malattie: indice di rischio sintetico nell'UP 'Montegalda - VI'



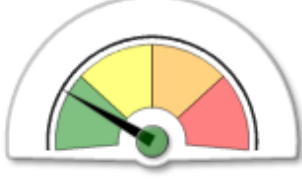
Ruggine Gialla



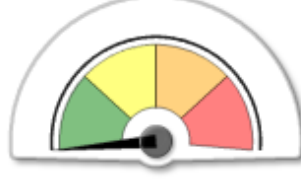
Septoriosi



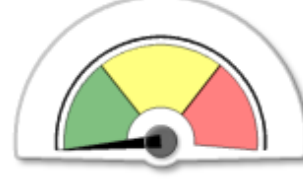
Oidio



Ruggine Bruna

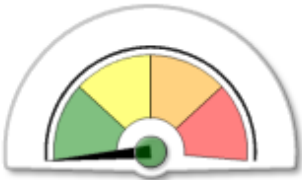


Fusariosi Spiga

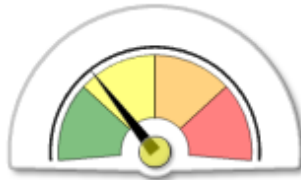


DON

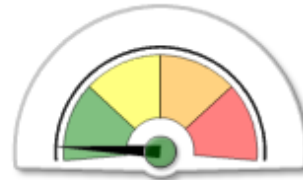
Malattie: indice di rischio sintetico nell'UP 'Montegalda - VI 2'



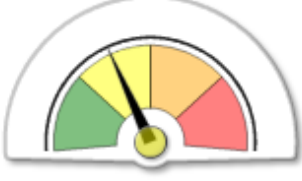
Ruggine Gialla



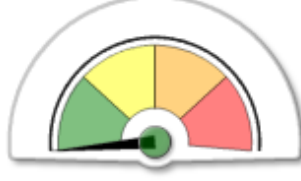
Septoriosi



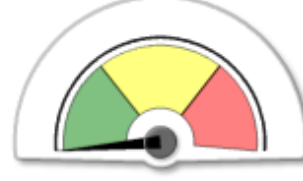
Oidio



Ruggine Bruna



Fusariosi Spiga



DON