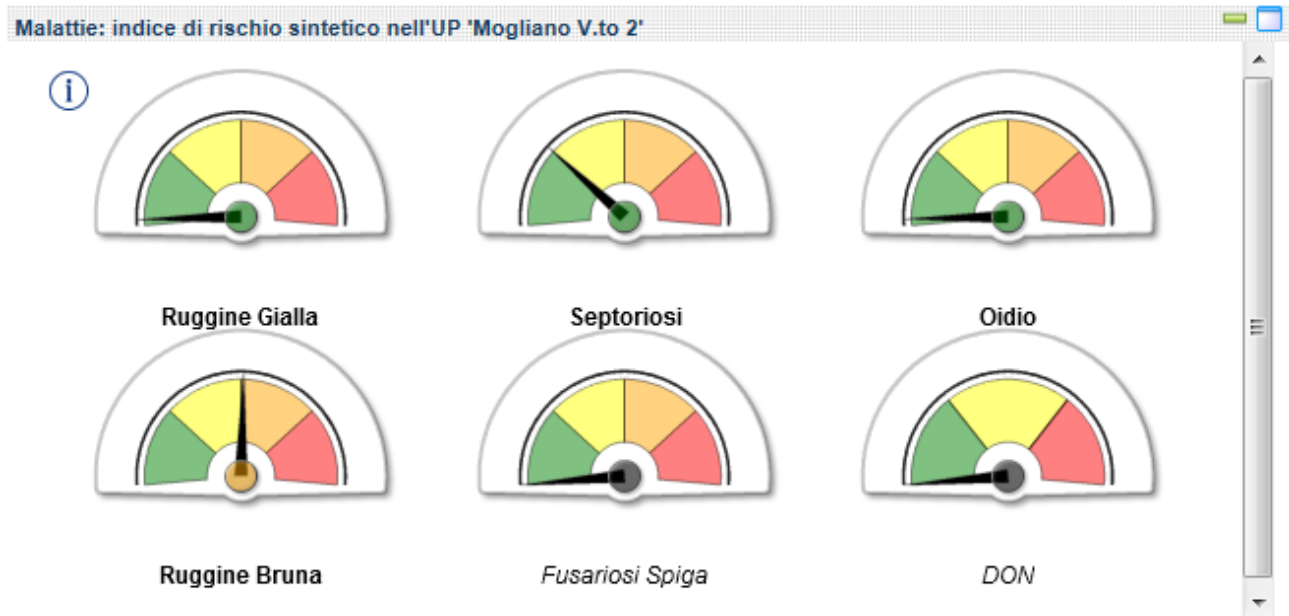
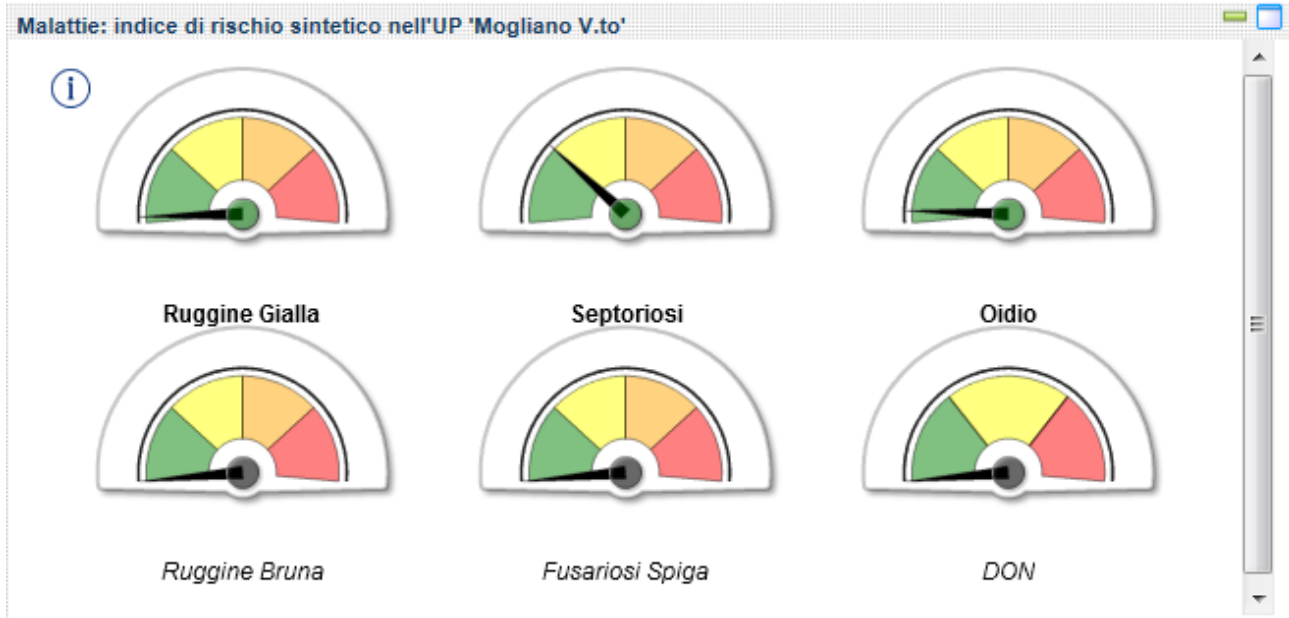
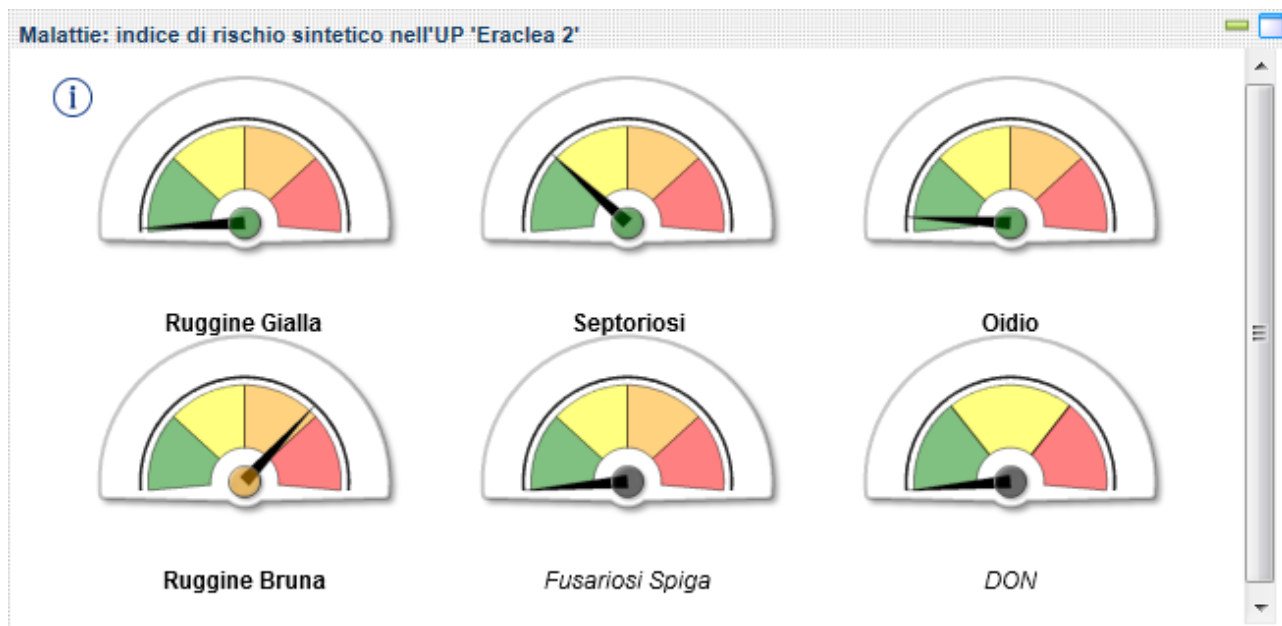
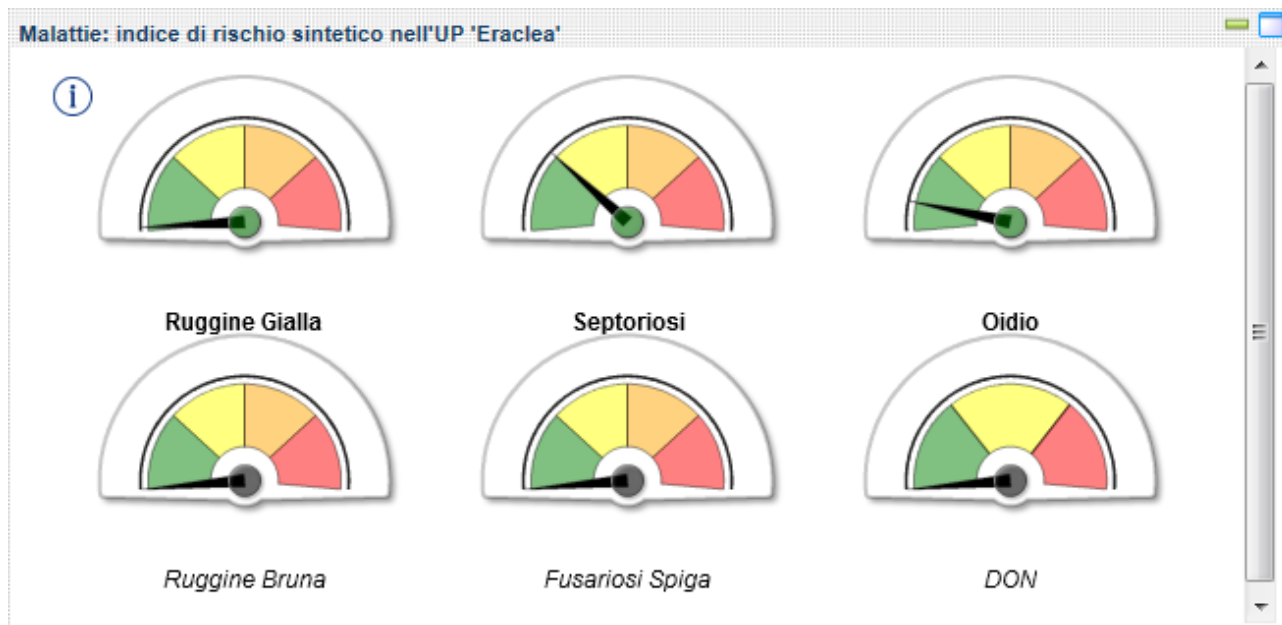
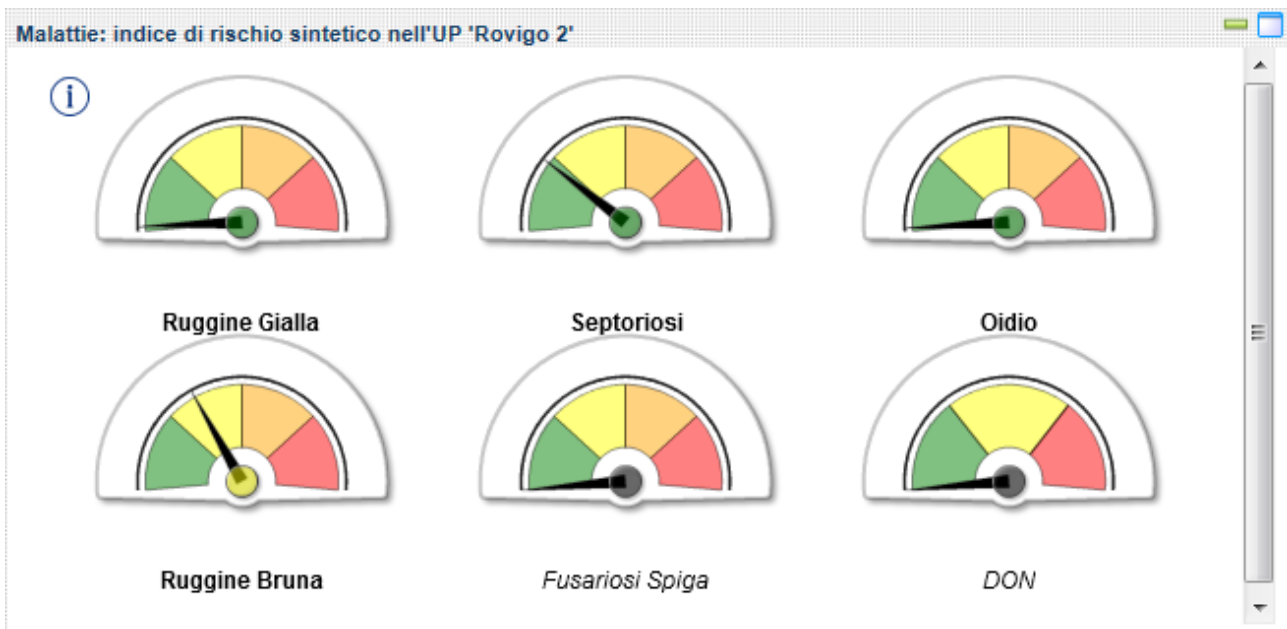
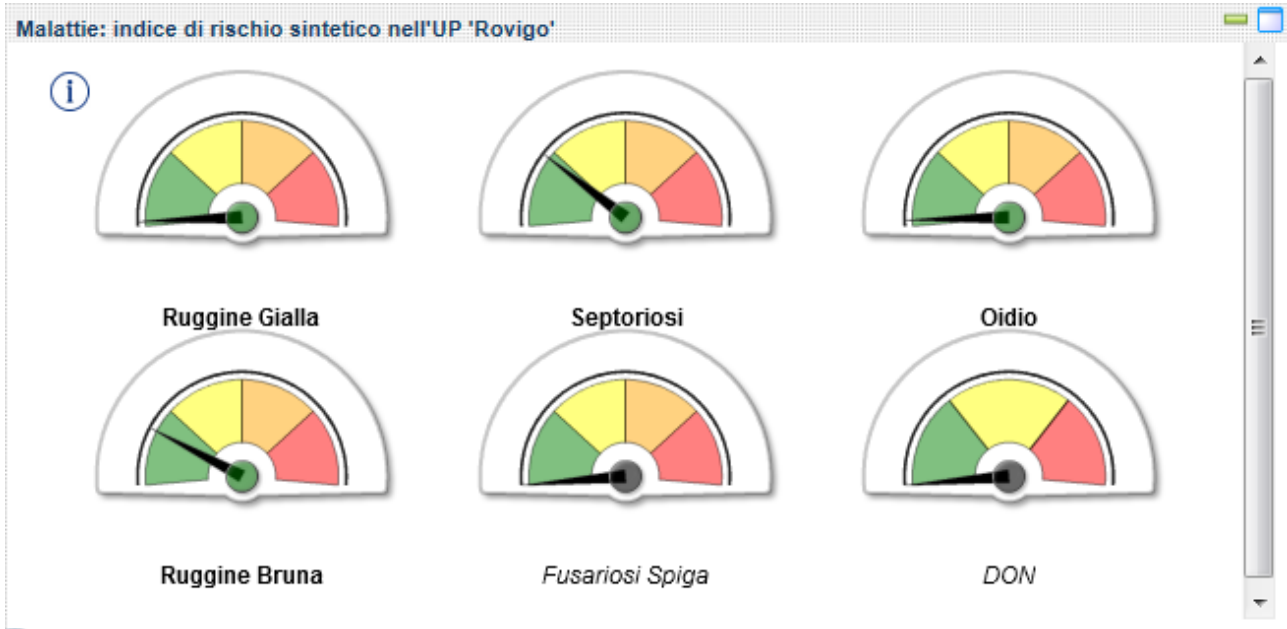


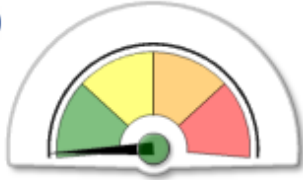
OUTPUT PIATTAFORMA HORTA 27/04/2016



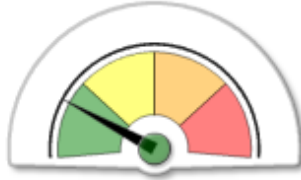




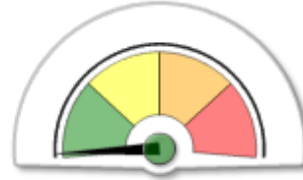
Malattie: indice di rischio sintetico nell'UP 'Lonigo'



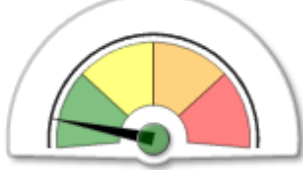
Ruggine Gialla



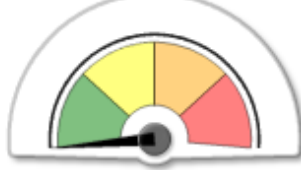
Septoriosi



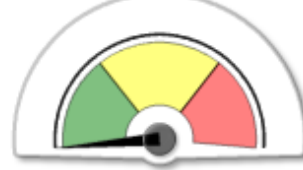
Oidio



Ruggine Bruna

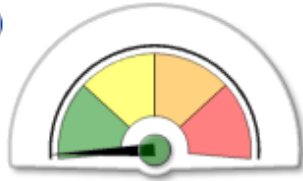


Fusariosi Spiga

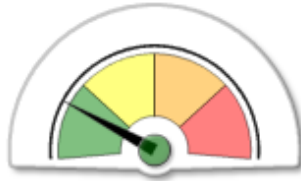


DON

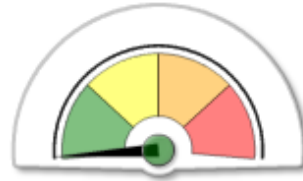
Malattie: indice di rischio sintetico nell'UP 'Lonigo 2'



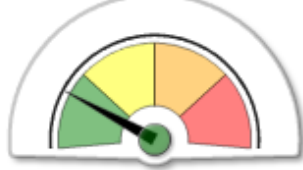
Ruggine Gialla



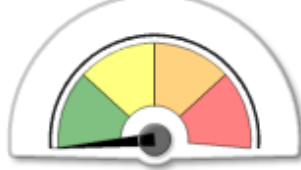
Septoriosi



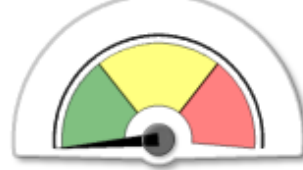
Oidio



Ruggine Bruna

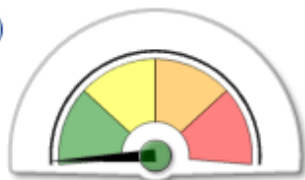


Fusariosi Spiga

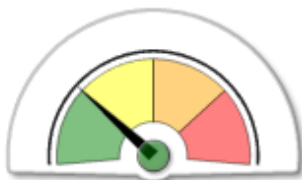


DON

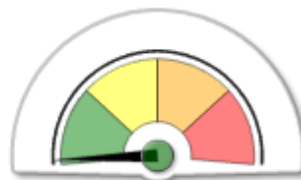
Malattie: indice di rischio sintetico nell'UP 'Verona'



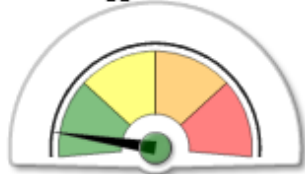
Ruggine Gialla



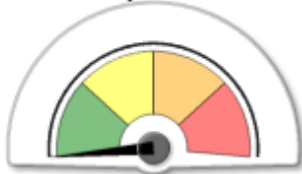
Septoriosi



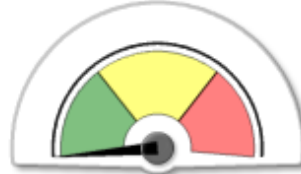
Oidio



Ruggine Bruna

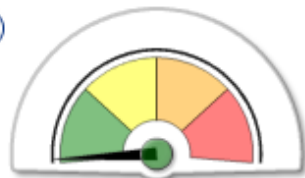


Fusariosi Spiga

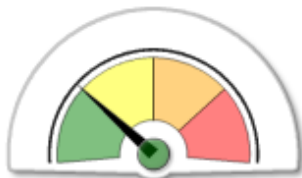


DON

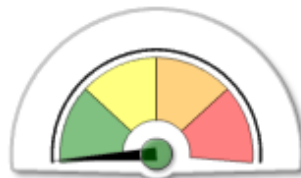
Malattie: indice di rischio sintetico nell'UP 'Verona 2'



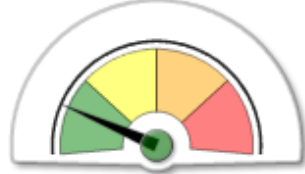
Ruggine Gialla



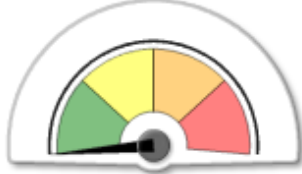
Septoriosi



Oidio



Ruggine Bruna

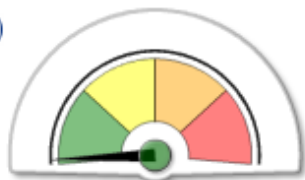


Fusariosi Spiga

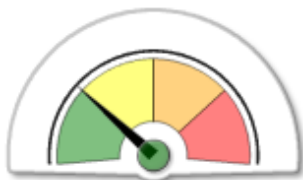


DON

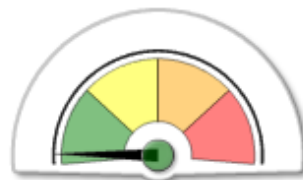
Malattie: indice di rischio sintetico nell'UP 'Legnaro'



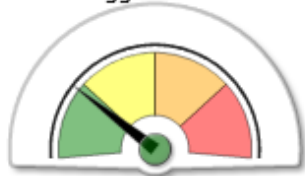
Ruggine Gialla



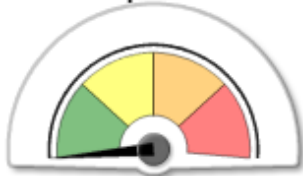
Septoriosi



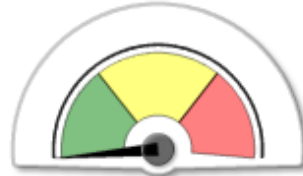
Oidio



Ruggine Bruna

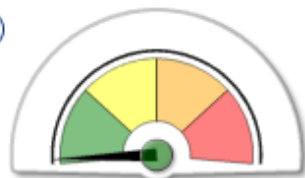


Fusariosi Spiga

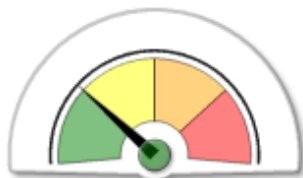


DON

Malattie: indice di rischio sintetico nell'UP 'Legnaro 2'



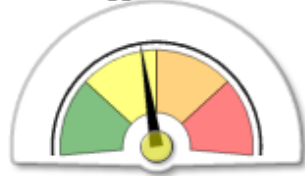
Ruggine Gialla



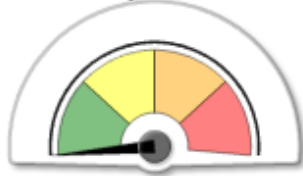
Septoriosi



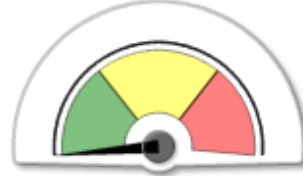
Oidio



Ruggine Bruna



Fusariosi Spiga



DON