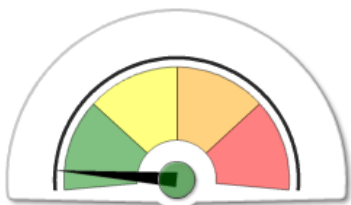
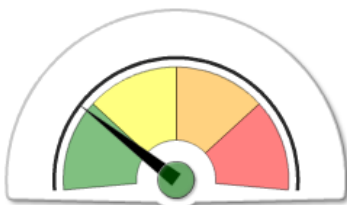


VARIETA' TOLLERANTE

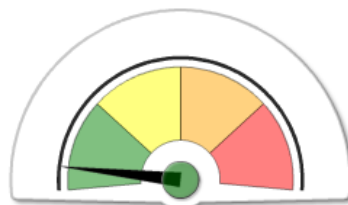
Malattie: indice di rischio sintetico nell'UP 'VERONA'



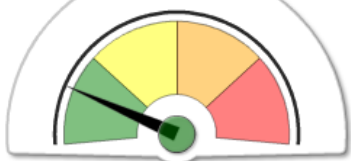
Ruggine Gialla



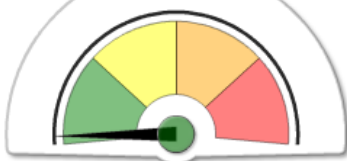
Sentoriosi



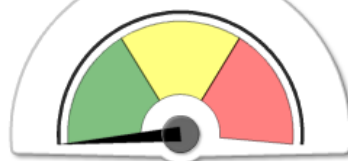
Oidio



Ruggine Bruna



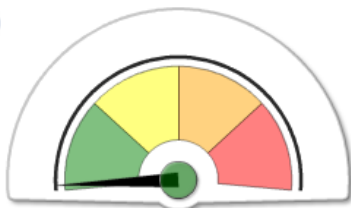
Fusariosi Spiga



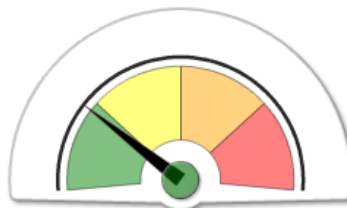
DON (con trattamento)

VARIETA' SENSIBILE

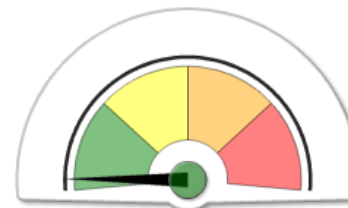
Malattie: indice di rischio sintetico nell'UP 'VERONA 2'



Ruggine Gialla



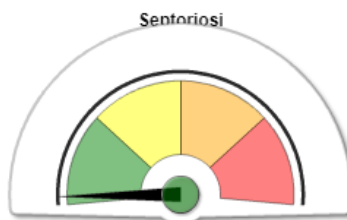
Sentoriosi



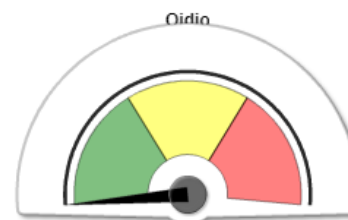
Oidio



Ruggine Bruna



Fusariosi Spiga

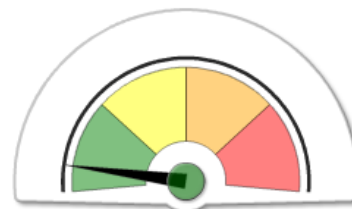
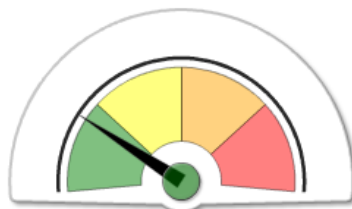
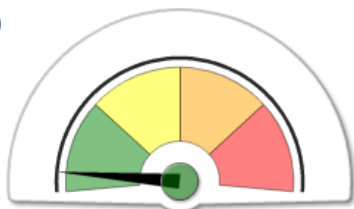


DON (con trattamento)

VARIETA' TOLLERANTE

Malattie: indice di rischio sintetico nell'UP 'LONIGO'

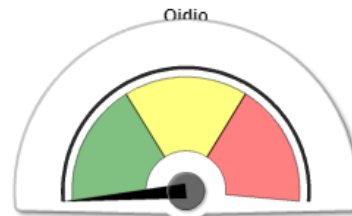
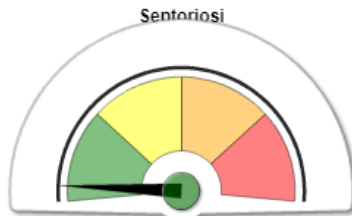
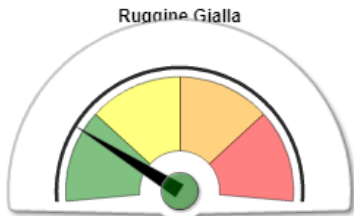
i



Ruggine Gialla

Sentoriosi

Oidio



Ruggine Bruna

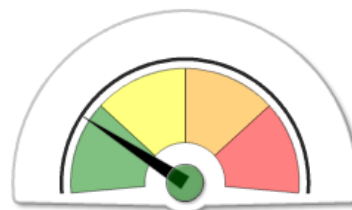
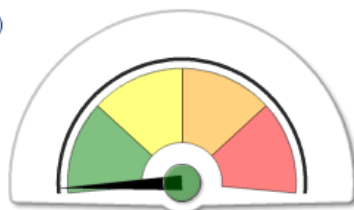
Fusariosi Spiga

DON (con trattamento)

VARIETA' SENSIBILE

Malattie: indice di rischio sintetico nell'UP 'LONIGO 2'

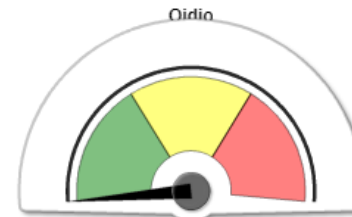
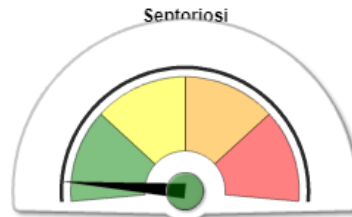
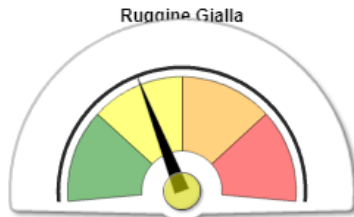
i



Ruggine Gialla

Sentoriosi

Oidio



Ruggine Bruna

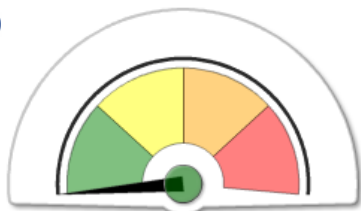
Fusariosi Spiga

DON (con trattamento)

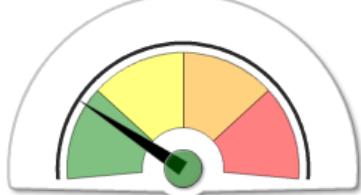
VARIETA' TOLLERANTE

Malattie: indice di rischio sintetico nell'UP 'LEGNARO'

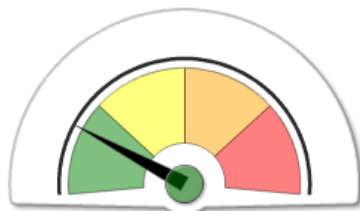
i



Ruggine Gialla



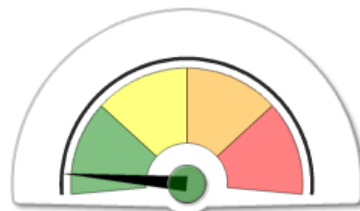
Ruggine Bruna



Settoriosi



Fusariosi Spiga



Oidio

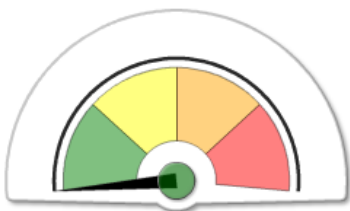


DON (con trattamento)

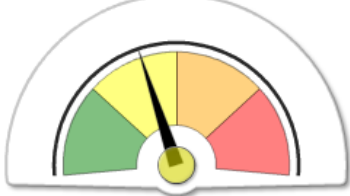
VARIETA' SENSIBILE

Malattie: indice di rischio sintetico nell'UP 'LEGNARO 2'

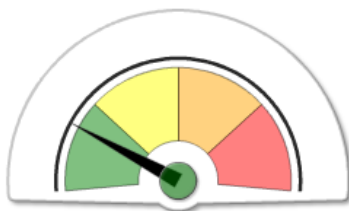
i



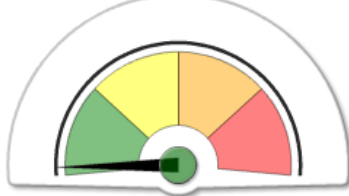
Ruggine Gialla



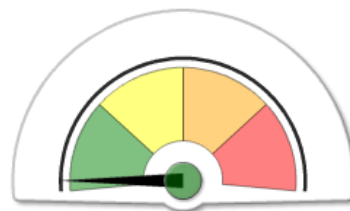
Ruggine Bruna



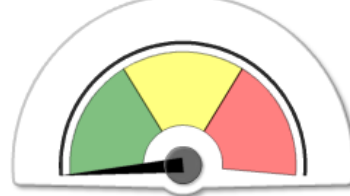
Settoriosi



Fusariosi Spiga



Oidio

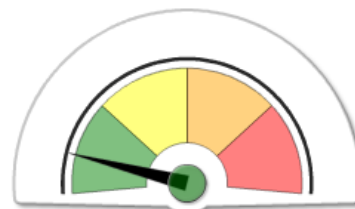
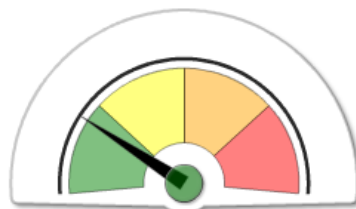
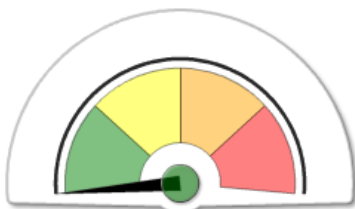


DON (con trattamento)

VARIETA' TOLLERANTE

Malattie: indice di rischio sintetico nell'UP 'ROVIGO'

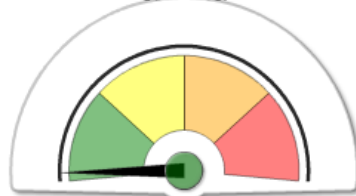
i



Ruggine Gialla

Sentoriosi

Oidio



Ruggine Bruna

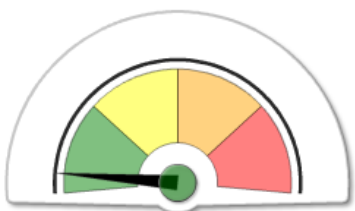
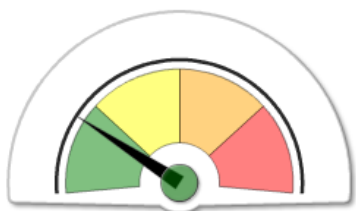
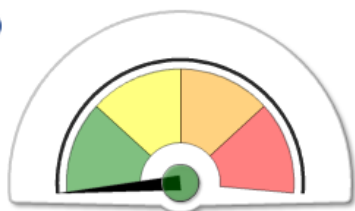
Fusariosi Spiga

DON (con trattamento)

VARIETA' SENSIBILE

Malattie: indice di rischio sintetico nell'UP 'ROVIGO 2'

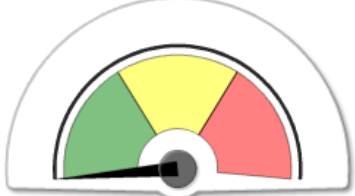
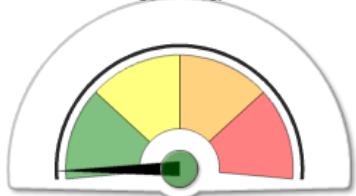
i



Ruggine Gialla

Sentoriosi

Oidio



Ruggine Bruna

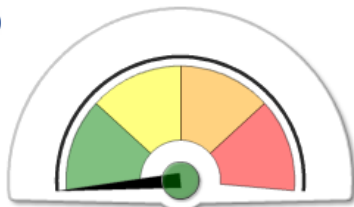
Fusariosi Spiga

DON (con trattamento)

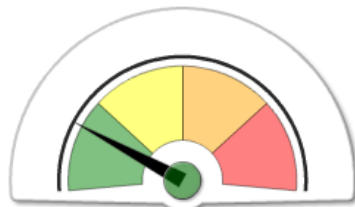
VARIETA' TOLLERANTE

Malattie: indice di rischio sintetico nell'UP 'ERACLEA'

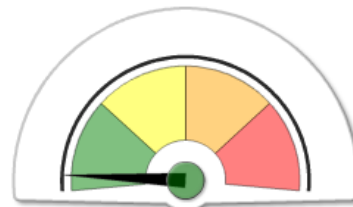
i



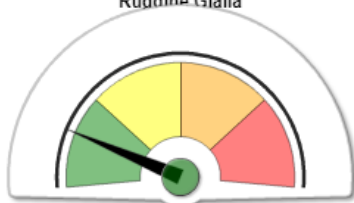
Ruggine Gialla



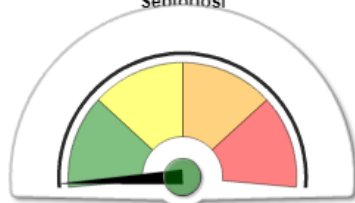
Sentoriosi



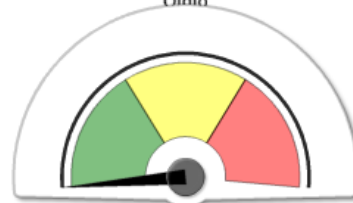
Oidio



Ruggine Bruna



Fusariosi Spiga

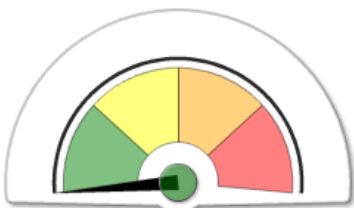


DON (con trattamento)

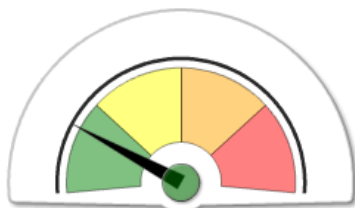
VARIETA' SENSIBILE

Malattie: indice di rischio sintetico nell'UP 'ERACLEA 2'

i



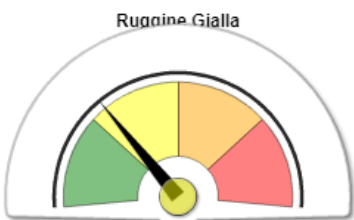
Ruggine Gialla



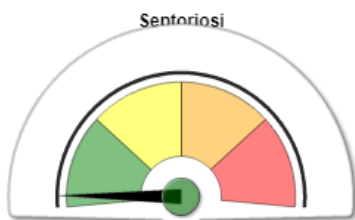
Sentoriosi



Oidio



Ruggine Bruna



Fusariosi Spiga

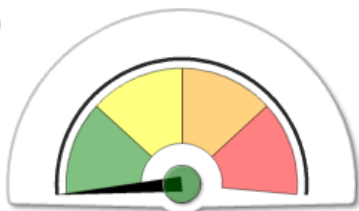


DON (con trattamento)

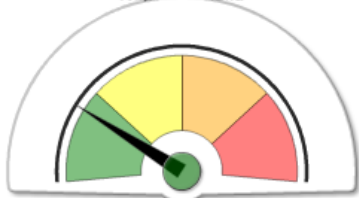
VARIETA' TOLLERANTE

Malattie: indice di rischio sintetico nell'UP 'MOGLIANO V.TO'

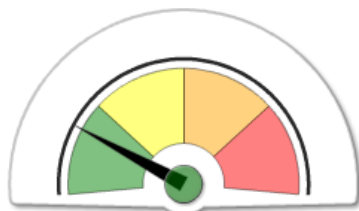
i



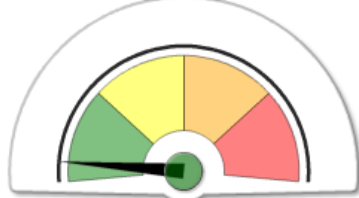
Ruggine Gialla



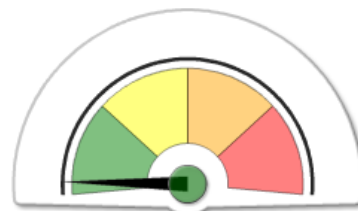
Ruggine Bruna



Sentoriosi



Fusariosi Spiga



Oidio

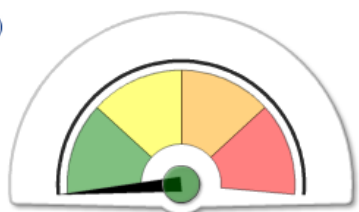


DON (con trattamento)

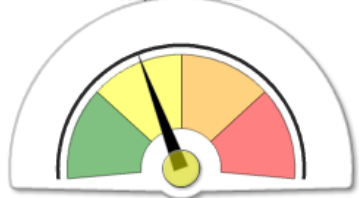
VARIETA' SENSIBILE

Malattie: indice di rischio sintetico nell'UP 'MOGLIANO V.TO 2'

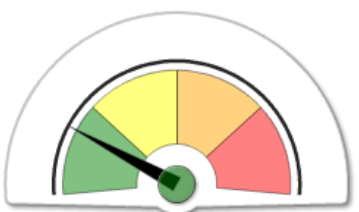
i



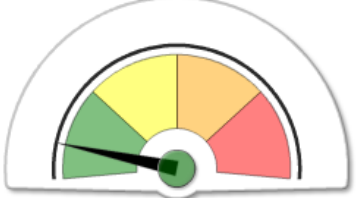
Ruggine Gialla



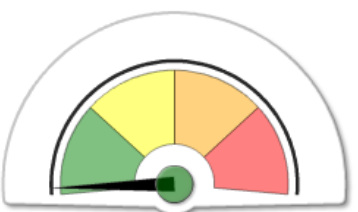
Ruggine Bruna



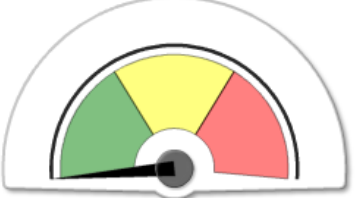
Sentoriosi



Fusariosi Spiga



Oidio



DON (con trattamento)